

Add link to advanced search
info to IGB interface

IGBF-3370

IGB Page

IGB Browser interface showing search options and a table of results.

Navigation tabs: [Data Access](#) [Annotation](#) [Graph](#) [Advanced Search](#) [Selection Info](#) [Sliced View](#) [Log](#) [External View](#) [Plug-ins](#)

Search for annotations or sequence in A_thaliana_Jun_2009

Search: in for

Buttons:

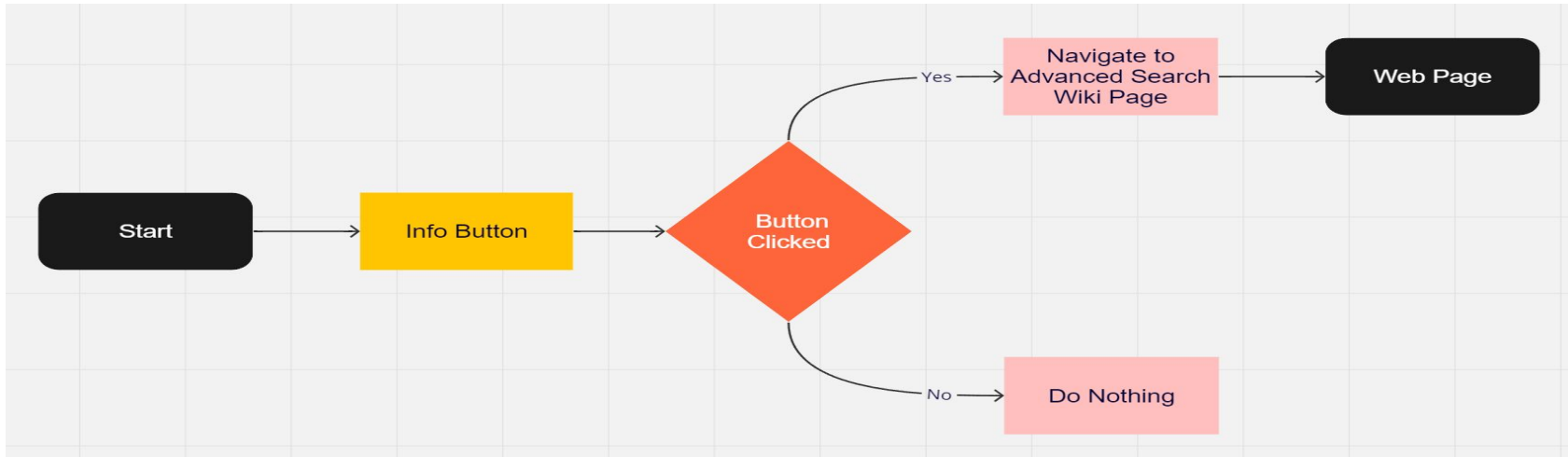
Handwritten note: "Click here" with a red arrow pointing to the search area.

D	Title	Description	Track	Start	End	Chr	Strand
4G33030.1	SQD1	sulfoquinovosyldiacylglycerol 1	Araport	15935372	15937833	Chr4	+
5G24160.1	SQE6	squalene monooxygenase 6	Araport	8186704	8182916	Chr5	-
5G28840.2	GME	GDP-D-mannose 3',5'-epimerase	Araport	10864903	10862172	Chr5	-
3G30720.1	QQS	qua-quine starch	Araport	12349046	12349900	Chr3	+
5G24160.3	SQE6	squalene monooxygenase 6	Araport	8186100	8183074	Chr5	-
1G49670.2	NQR	ARP protein (REF)	Araport	18386108	18380803	Chr1	-

und 48448 matches for local search Double-click rows to view matches

Design-1

- Once user clicks the info button, it takes user to the advanced search wiki web page.



Pros:

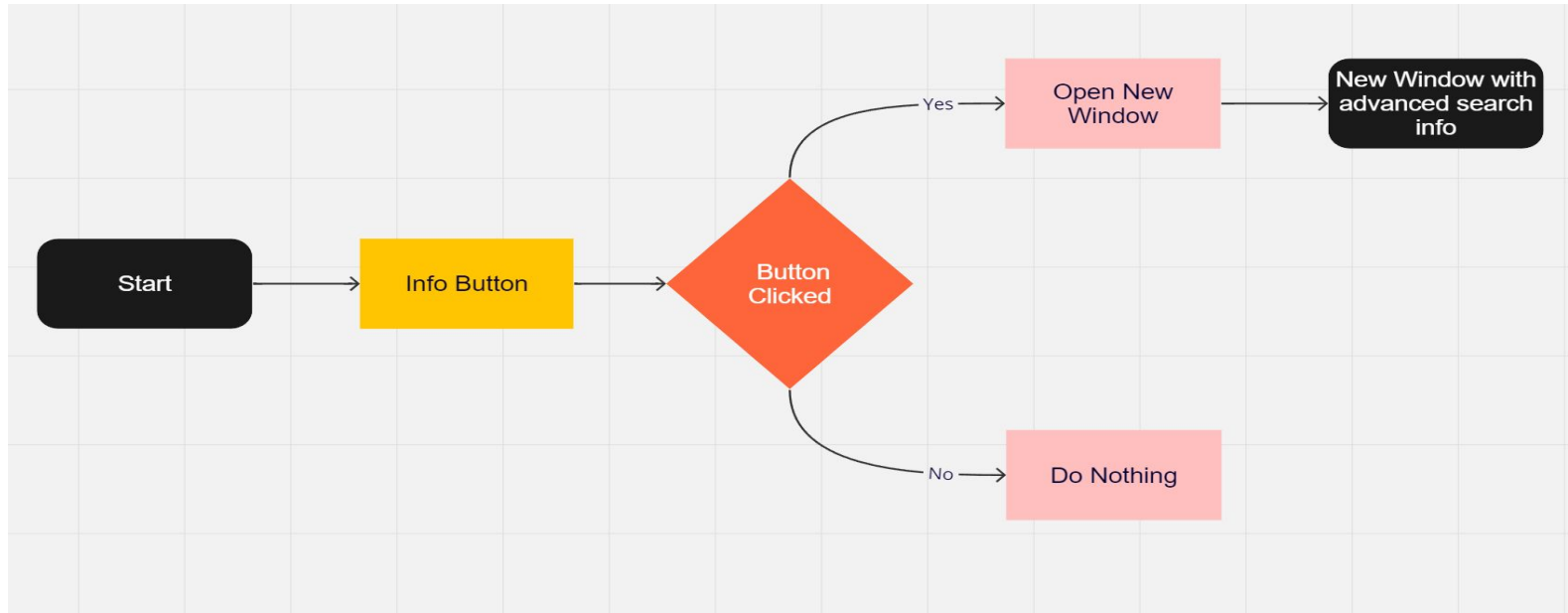
- Easy to implement.

Cons:

- For suppose, if the link is broken, we need to need to modify the code so that it points to the right link.

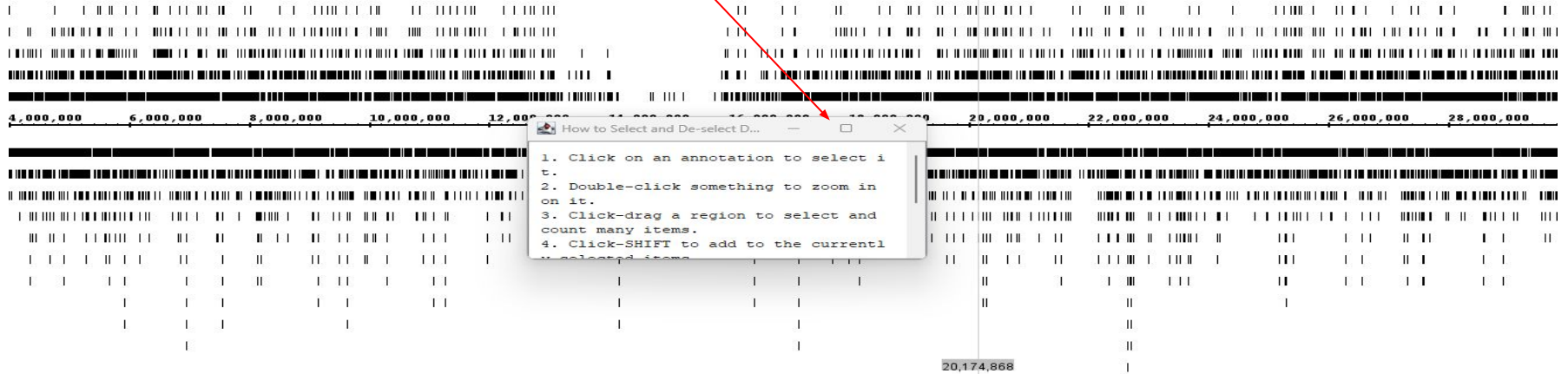
Design 2

- This time we open a new window in IGB itself which contains information about advanced search.



Design 2

New window appears, which has instructions about advanced search



tion Info Sliced View Log External View Plug-ins

Description	Track	Start	End	Chr	Strand
sulfoquinovosyldiacylglycerol 1	Araport	15935372	15937833	Chr4	+
squalene monooxygenase 6	Araport	8186704	8182916	Chr5	-
GDP-D-mannose 3',5'-epimerase	Araport	10864903	10862172	Chr5	-
qua-quine starch	Araport	12349046	12349900	Chr3	+

Design-2

Pros

- Shows up in IGB itself.
- Works without internet.

Cons

- Need to write additional documentation(summary of advanced search).

Note:

In this design we can provide main hacks about advance search in pop up window and provide a link to actual documentation for more information.